



**BISON PRECAST**

a Forterra brand

# TECHNICAL GUIDANCE NOTE

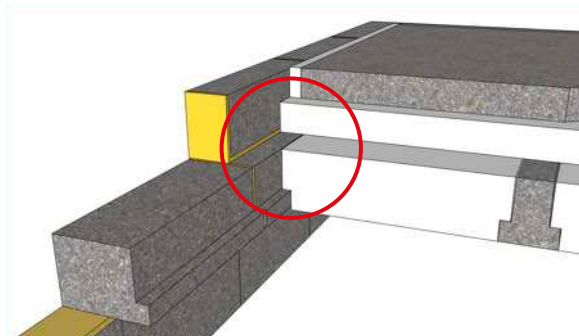
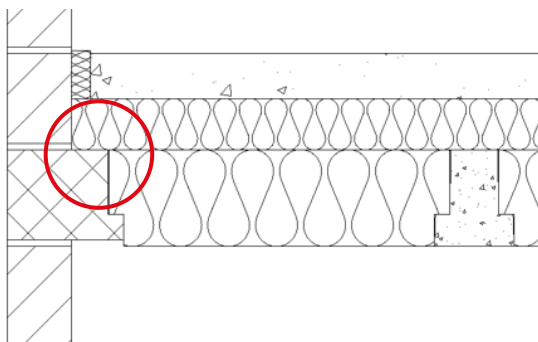
Jetfloor - Wider Thermalite edge blocks - 4 January 2018

This Guidance Note explains the changes to the Jetfloor edge detail which have resulted from NHBC reinforcement changes.

## Wider JL blocks

Jetfloor L-shaped Thermalite (JL) blocks form a simple, safe and structurally effective edge detail.

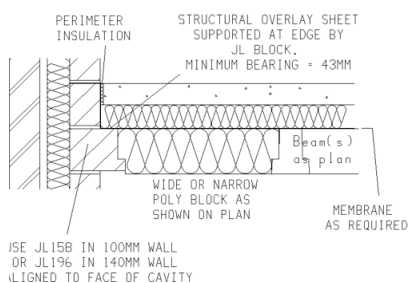
The L-shaped blocks are now wider, this creates a ledge which supports the edge of the Jetfloor polystyrene overlay sheet. This allows Jetfloor to use the wide polystyrene block at the edge detail so that the first beam clears service pipes which are often near the wall.



## Installers

1. Look on the Jetfloor layout drawings for Section JF10 – this indicates the new edge detail.

### JF10 EDGE DETAIL



ALL WALL BLOCKS  
TO BE MORTAR BEDDED

2. Be aware that the beam layout will be different and normally simpler.
3. Be aware that the Wide polystyrene blocks may now be installed at the floor edge.
4. The 150mm deep perimeter insulation strip 'P35' will be discontinued and cannot be used in the new edge detail. It will be replaced by the existing 75mm deep P34 strip (as shown above).
5. As with any floor block, ensure that the beams/polystyrene blocks/JL edge blocks are a close fit for maximum stability.
6. JL158 blocks (158mm top face) are used in 100mm walls.
7. JL196 blocks (196mm top face) are used in 140mm walls.